

© Human Wildlife Solutions

Human Wildlife Solutions

Overstrand

Monthly Report

December 2022

TABLE OF CONTENTS:

TABLE OF CONTENTS: 2

INTRODUCTION 3

OVERSTRAND EAST TROOPS..... 4

1.1 VOËLKLIP TROOP..... 4

1.2 VOGELGAT TROOP 6

1.3 ONRUS TROOP 7

1.4 HAMILTON RUSSEL TROOP 7

1.5 BIRTHS, DEATHS & MIGRATIONS 7

OVERSTRAND WEST TROOPS..... 8

1.6 PRINGLE BAY TROOP 8

1.7 HANGKLIP TROOP 10

1.8 SILVERSANDS TROOP 11

1.9 BETTY’S BAY TROOP 13

1.10 BIRTHS, DEATHS & MIGRATIONS 15

GENERAL COMMENTS – ALL TROOPS..... 16

1.12 POPULATION CHARACTERISTICS 16

1.13 HOTLINE DATA..... 16

1.14 RECORDED INCURSIONS..... 18

1.15 PERCENTAGE TIME OUT OF TOWN..... 18

1.16 RECOMMENDATIONS..... 19

CONCLUSION 20

INTRODUCTION

This monthly report covers the period from 1 December to 31 December 2022.

The baboon management data for the past calendar year reflects some dramatic changes in several managed troop behaviours. Most notable, is the contrast between the Pringle Bay and Voëlklip Troops. The Pringle Bay Troop has gone from a troop that during 2021 used to be 100% out of town with a few regular raiding individuals, to a troop now that basically lives in and around town. This is in stark contrast to the Voëlklip Troop (the troop that inspired the Overstrand baboon management programme) which over the whole year never spent more than 1.4% time in town for any particular month. Furthermore, it is notable that over the whole year, the Voëlklip Troop recorded a total of only ten occupied house incursions, whereas the Pringle Bay Troop recorded 510. In fact, juveniles in the Pringle Bay Troop recorded more occupied house incursions (12) during November & December than the Voëlklip Troop did over the whole year. This is a trend that needs to be monitored closely.

During December, the influx of baboon naïve tourists was probably a major factor leading to the Voëlklip Troop spending an increased amount of time in the urban area. Whilst the troop was in town on only three days, individuals from the troop managed to enter the urban area on 20 days during December. Despite the increased presence of baboons in town only one occupied house incursion was recorded for the whole month. Unlike the Voëlklip Troop, the Vogelgat Troop was again entirely absent from the urban area. Unfortunately, members of the Vogelgat troop continued to frequent non-urban properties along the R43 outside the management area.

In the Western Overstrand there was an improvement in time out of town for the Betty's Bay Troop, with the troop and individuals increasing time out of town by 4% and 9% respectively since November. Incursion behaviour of the troop however saw no such improvement, with an increased number (n=22) of occupied house incursions recorded during the month. In Pringle Bay there was a significant increase in the amount of time spent in town by troop individuals. Given the high number of instances of threatening and stealing behaviour by some immigrant males in this troop during November, in mid-December a dedicated field ranger was placed in the central business district (CBD) of Pringle Bay in order to try and mitigate against future instances of these behaviours.

On the Hangklip Peninsula, the Hangklip Troop were seen infrequently. However, there were several days when both the Hangklip and Pringle Bay Troops were observed near the Hangklip Hotel. Fortunately, HKM3 returned to the Hangklip Troop on 19 December after having associated with the Pringle Bay Troop since 21 November. The return of radio collared HKM3 to the Hangklip Troop allowed HWS to locate the Hangklip Troop again.

In Silversands, the troop entered the urban area on two days during December. SSM1 continued to enter town and was responsible for four occupied house incursions. Because SSM1 was often encountered as he left the urban area, it is recommended that he be radio collared in order to mitigate against his incursion behaviour more effectively.

OVERSTRAND EAST TROOPS

VOËLKLIP TROOP

1.1.1 IN TOWN STATISTICS

- Troop time out of town decreased by 1.4% during December. Prior to December, the troop had been absent from the urban area for two consecutive months.
- Time out of town for individuals decreased significantly (-8.4%) from 96.7% to 88.3% during December.

| | % Out of Town | % Up or Down from Previous Month | Days Entered | Total Time in Town | Avg Time in Town per day | Max Daily Time in Town | Min Daily Time in Town |
|--------------------|---------------|----------------------------------|--------------|--------------------|--------------------------|------------------------|------------------------|
| Troop | 98.6 | - 1.4 | 3 | 6:07 | 2:02 | 03:25 | 00:27 |
| Individuals | 88.3 | - 8.4 | 20 | 52:26 | 2:37 | 05:38 | 00:30 |

Table 1.1 In Town Statistics for the Voëklip Troop for December 2022. Time is expressed in hours and minutes. Average daylength in December was 14 hours and 24 Minutes.

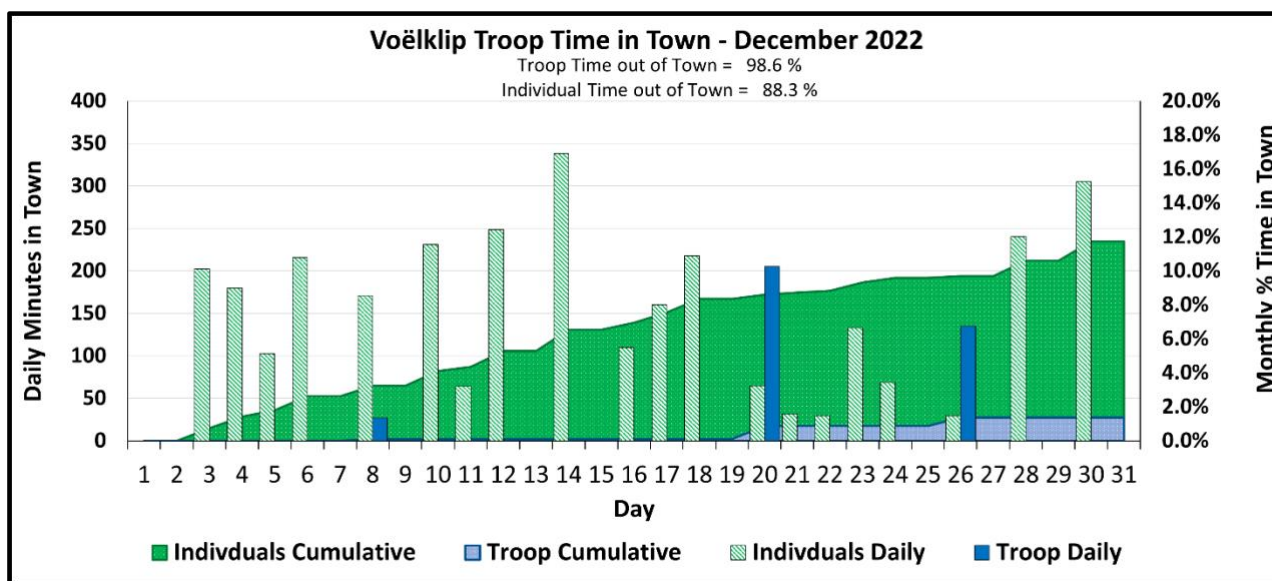


Figure 1.1 Troop and individual daily time (minutes) in town (bars), and monthly (area) percentage Time in Town by the Voëklip Troop during December 2022.

1.1.2 NOTEWORTHY INCIDENTS

1.1.2.1 HERMANUS HEIGHTS & GOLF COURSE

- No baboons from the Voelklip Troop entered Hermanus Heights during December, despite using the Erica Close and Heights Dam sleep sites on several nights during the month.

| HWS: TROOP MONTHLY REPORT | | | | | | | | | | | | | | | | | | | | | | | | | | | | | | | | | |
|---------------------------|--|------------------------------|---|---|---|---|---|---|---|---|----|----|----|----|----|----|----|----|----|----|----|----|----|----|----|----|----|----|----|----|----|----|-------|
| SECTOR | | CLASSES OF BEHAVIOUR | | | | | | | | | | | | | | | | | | | | | | | | | | | | | | | |
| OVERSTRAND | | | | | | | | | | | | | | | | | | | | | | | | | | | | | | | | | |
| BABOON TROOP: Voëlklip | | VOËLKIP | | | | | | | | | | | | | | | | | | | | | | | | | | | | | | | |
| MONTH: December | | YEAR: 2022 | | | | | | | | | | | | | | | | | | | | | | | | | | | | | | | |
| | | 1 | 2 | 3 | 4 | 5 | 6 | 7 | 8 | 9 | 10 | 11 | 12 | 13 | 14 | 15 | 16 | 17 | 18 | 19 | 20 | 21 | 22 | 23 | 24 | 25 | 26 | 27 | 28 | 29 | 30 | 31 | TOTAL |
| Troop | | | | | | | | | | | | | | | | | | | | | | | | | | | | | | | | | |
| VGM1 BLUE TAG | | | | | | | | | | | | | | | | | | | | | | | | | | | | | | | | | |
| UNKM1 | | | | | | | | | | | | | | | | | | | | | | | | | | | | | | | | | |
| VKF4 YELLOW TAG | | | | | | | | | | | | | | | | | | | | | | | | | | | | | | | | | |
| VKF5 RED TAG | | | | | | | | | | | | | | | | | | | | | | | | | | | | | | | | | |
| VKF1 GREEN TAG | | | | | | | | | | | | | | | | | | | | | | | | | | | | | | | | | |
| VKF6 ORANGE TAG | | | | | | | | | | | | | | | | | | | | | | | | | | | | | | | | | |
| VKF7 PINK TAG | | | | | | | | | | | | | | | | | | | | | | | | | | | | | | | | | |
| UnID Male | | | | | | | | | | | | | | | | | | | | | | | | | | | | | | | | | |
| UnID Males | | | | | | | | | | | | | | | | | | | | | | | | | | | | | | | | | |
| UnID Females | | | | | | | | | | | | | | | | | | | | | | | | | | | | | | | | | |
| UnID Female | | | | | | | | | | | | | | | | | | | | | | | | | | | | | | | | | |
| UnID Individuals | | | | | | | | | | | | | | | | | | | | | | | | | | | | | | | | | |
| UnID Juveniles | | | | | | | | | | | | | | | | | | | | | | | | | | | | | | | | | |
| | | % | | | | | | | | | | | | | | | | | | | | | | | | | | | | | | | |
| | | TIME SPENT IN TOWN (Minutes) | | | | | | | | | | | | | | | | | | | | | | | | | | | | | | | |
| | | HRS | | | | | | | | | | | | | | | | | | | | | | | | | | | | | | | |
| Troop | | | | | | | | | | | | | | | | | | | | | | | | | | | | | | | | | |
| Individuals | | | | | | | | | | | | | | | | | | | | | | | | | | | | | | | | | |
| Roost: | | AM | | | | | | | | | | | | | | | | | | | | | | | | | | | | | | | |
| Roost: | | PM | | | | | | | | | | | | | | | | | | | | | | | | | | | | | | | |
| Roost Sites | | | | | | | | | | | | | | | | | | | | | | | | | | | | | | | | | |
| ID Features of Baboons | | | | | | | | | | | | | | | | | | | | | | | | | | | | | | | | | |
| General remarks | | | | | | | | | | | | | | | | | | | | | | | | | | | | | | | | | |

Figure 1.2: The Voëlklip Troop incident sheet for December 2022.

1.1.2.2 VOËLKIP & FERNKLOOF

- Individuals were recorded in Voëlklip on 17 days, and in Fernkloof on two days, during December.
- Voëlklip Troop was present in Voëlklip on two days, and in Fernkloof on one day during December.

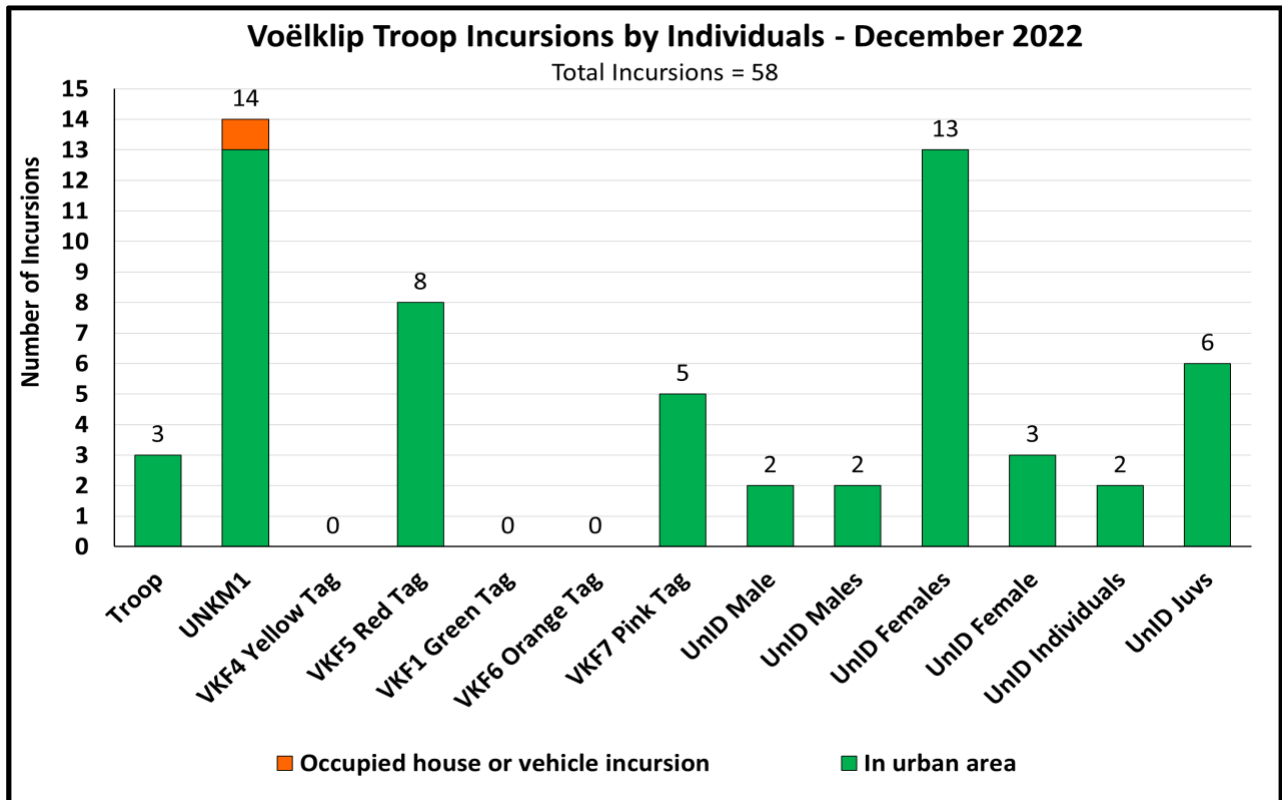


Figure 1.3 Number of incursions for the Voëlklip Troop and individuals during December 2022. **Note:** Observed incursions are not hotline related, but are incursions observed, or verified with evidence, by HWS Field Staff.

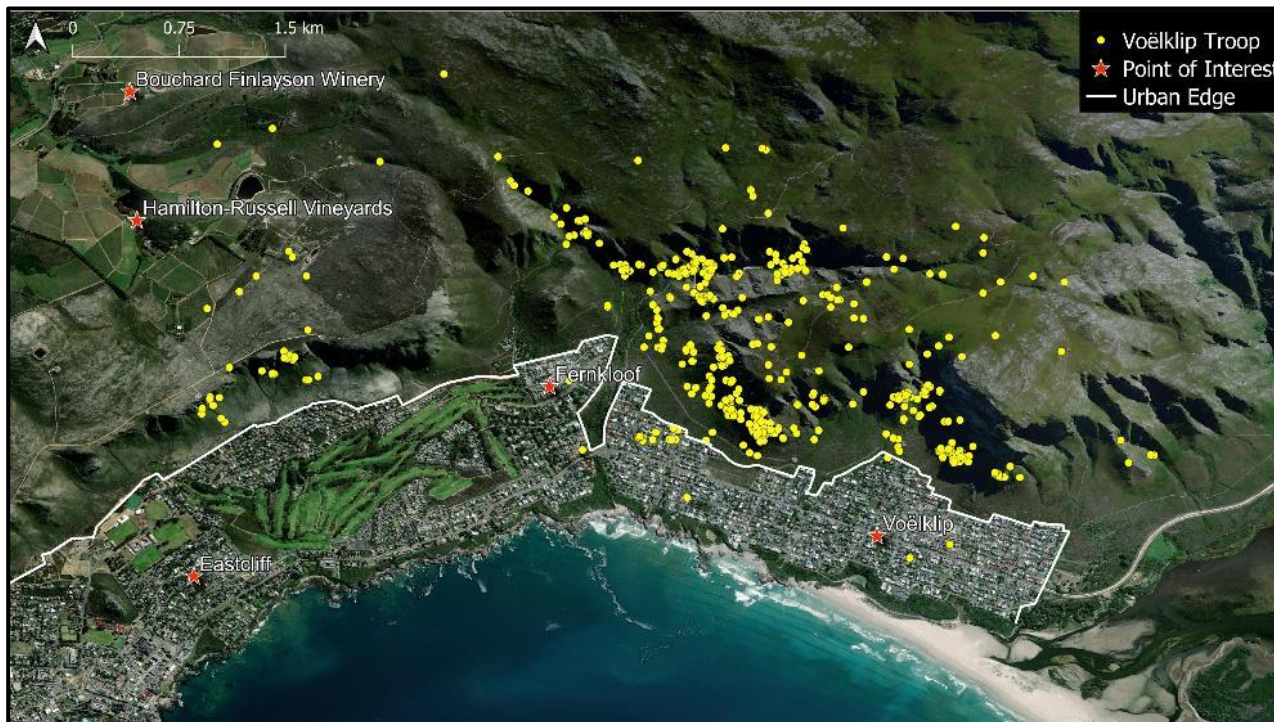


Figure 1.4 Map showing the GPS locations of VKF7 in the Voëlklip Troop during December 2022.

VOGELGAT TROOP

1.1.3 IN TOWN STATISTICS

- Time out of town for the Troop remained at 100% during December. December is the third consecutive month that the Vogelgat Troop has been absent from the urban area.
- Time out of town for individuals remained at 100% during December.

| | % Out of Town | % Up or Down from Previous Month | Days Entered | Total Time in Town | Avg Time in Town per day | Max Daily Time in Town | Min Daily Time in Town |
|--------------------|---------------|----------------------------------|--------------|--------------------|--------------------------|------------------------|------------------------|
| Troop | 100.0 | 0.0 | 0 | 0:00 | 0:00 | 0:00 | 0:00 |
| Individuals | 100.0 | 0.0 | 0 | 0:00 | 0:00 | 0:00 | 0:00 |

Table 2.1 In Town Statistics for the Vogelgat Troop for December 2022. Time is expressed in hours and minutes. Average daylength in December was 14 hours and 24 Minutes

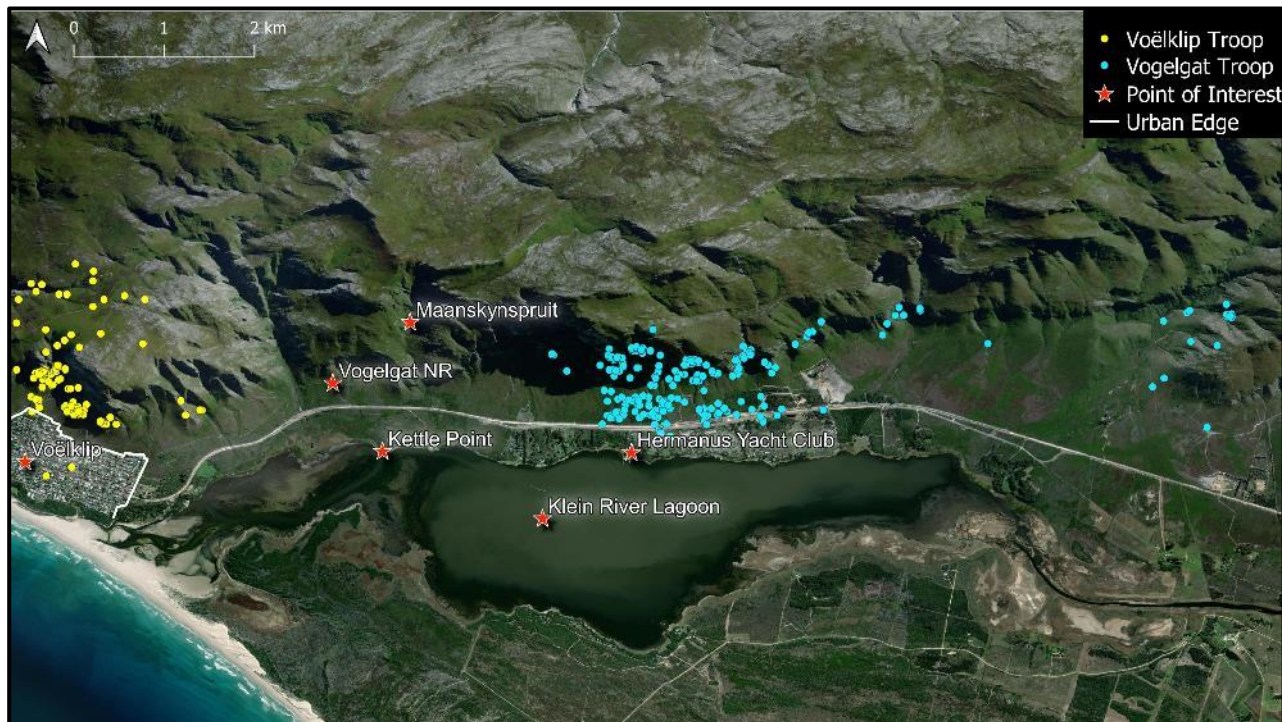


Figure 2.4 Map showing the location of VGM3 from the Vogelgat Troop (Cyan) and VKF7 from the Voëlklip Troop during December 2022.

1.1.4 NOTEWORTHY INCIDENTS

- The Vogelgat Troop spent the majority of their time in the vicinity of the Hermanus Yacht Club, sleeping on the mountain slopes to the north of the Klein River Lagoon.
- Several hotline reports were received regarding baboons in and around properties along the R43, with VGM3 the most commonly reported individual.

ONRUS TROOP

- There were no observations of the Onrus Troop during December.

HAMILTON RUSSEL TROOP

- There were no observations of the Hamilton-Russel Troop during December however one hotline call was received regarding the Hamilton-Russel Troop.

BIRTHS, DEATHS & MIGRATIONS

- No births or deaths were observed in the eastern Overstrand during December.

VIRTUAL FENCE

- In the Eastern Overstrand, the Virtual Fence was not activated during December.

OVERSTRAND WEST TROOPS

PRINGLE BAY TROOP

1.1.5 IN TOWN STATISTICS

- The time spent out of town by the Pringle Bay Troop increased by 1.8% during December, from 75.2% to 77.0%.
- Time out of town by Pringle Bay Troop individuals decreased drastically with individuals spending only 73.9% of their time out of town during December.

| | % Out of Town | % Up or Down from Previous Month | Days Entered | Total Time in Town | Avg Time in Town per day | Max Daily Time in Town | Min Daily Time in Town |
|--------------------|---------------|----------------------------------|--------------|--------------------|--------------------------|------------------------|------------------------|
| Troop | 77.0 | + 1.8 | 22 | 112:24 | 5:06 | 9:30 | 0:10 |
| Individuals | 73.9 | - 17.4 | 28 | 116:47 | 4:10 | 12:00 | 0:11 |

Table 3.1 In Town Statistics for the Pringle Bay Troop for December 2022. Time is expressed in hours and minutes. Average daylength in December was 14 hours and 24 Minutes.

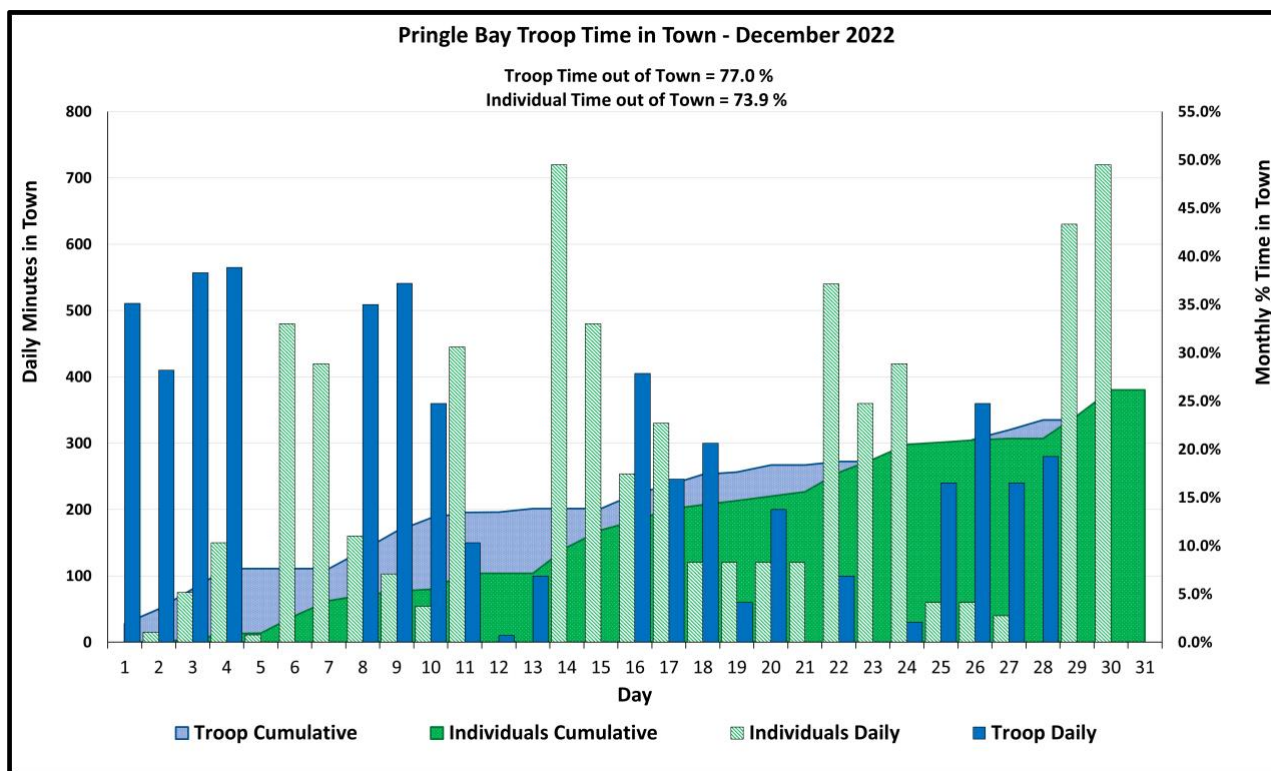


Figure 3.1 Troop and individual daily time (minutes) in town (bars), and monthly (area) percentage Time in Town by the Pringle Bay Troop during December 2022.

1.1.6 NOTEWORTHY INCIDENTS

- HKM3 left the Pringle Bay Troop and returned to the Hangklip Troop around 19 December. HKM3 had been associating with the Pringle Bay Troop since 21 November, a period of 30 days.

- The level of inter-male conflict within the Pringle Bay Troop remained elevated during December. Several males were observed with blood on them as well as other minor injuries. None of these injuries had any prolonged effects.
- Six instances of food being taken directly from humans were recorded during the month; four by BTM1, one by REM1, and one by an unidentified individual.

| SECTOR | | PRINGLE BAY | | HWS: TROOP MONTHLY REPORT | | CLASSES OF BEHAVIOUR | |
|------------------|---|-------------|-----|---------------------------|-----|----------------------|---------|
| OVERSTRAND | | PRINGLE BAY | | 1 | 2 | 3 | 4 |
| BABOON TROOP: | | PRINGLE BAY | | 1 | 2 | 3 | 4 |
| MONTH: December | | YEAR: 2022 | | 5 | 6 | 7 | 8 |
| | | | | 9 | 10 | 11 | 12 |
| | | | | 13 | 14 | 15 | 16 |
| | | | | 17 | 18 | 19 | 20 |
| | | | | 21 | 22 | 23 | 24 |
| | | | | 25 | 26 | 27 | 28 |
| | | | | 29 | 30 | 31 | TOTAL |
| Troop | | 1 | 1 | 1 | 1 | 1 | 1 |
| PBM2 | M | 6,6 | 1 | | | 1,6,6,6 | 1 |
| PBM3 | M | | | | | | |
| UKM2 | M | 2 | | | | | |
| BTM1(Blue tag) | M | | 1,7 | | 1 | | 7 |
| HKM1 | M | 1 | 1 | | | | 1 |
| HKM3 | M | 1 | 1 | | 1,6 | 1 | 1 |
| REM1 | M | 5 | 1,6 | 1 | 1 | 1 | 1,6,6,6 |
| PBF1 | F | | 1 | 1 | 1,6 | | 1 |
| PBF4 | F | | | | | | |
| PBF5 | F | | | 1 | | | |
| PBF6 | F | | | | | | |
| UnID Male | | | | | 1 | | |
| UnID Females | | 1 | | | | | |
| UnID Female | | | | | | 1 | |
| UnID Individuals | | 2 | | 1 | 1 | 1,2 | 2 |
| UnID Juvenile | | | | | | | 1,6 |
| UnID Juveniles | | 1 | | 6 | | 1,6,6 | 1 |

Figure 3.2 The Pringle Bay Troop incident sheet for December 2022. * Individual was not observed either entering or leaving town. Time in town was therefore estimated.

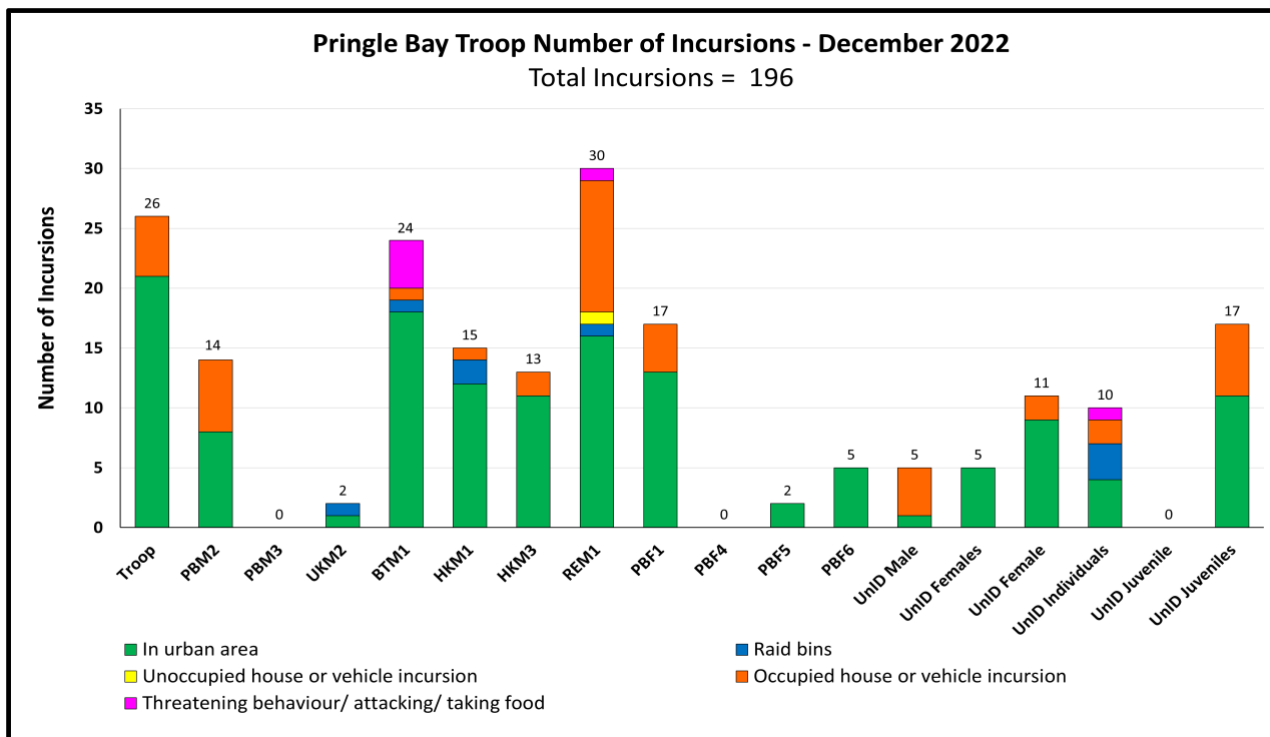


Figure 3.3 Number of incursions for the Pringle Bay Troop and individuals during December 2022. **Note:** Observed incursions are not hotline related, but are incursions observed, or verified with evidence, by HWS Field Staff.

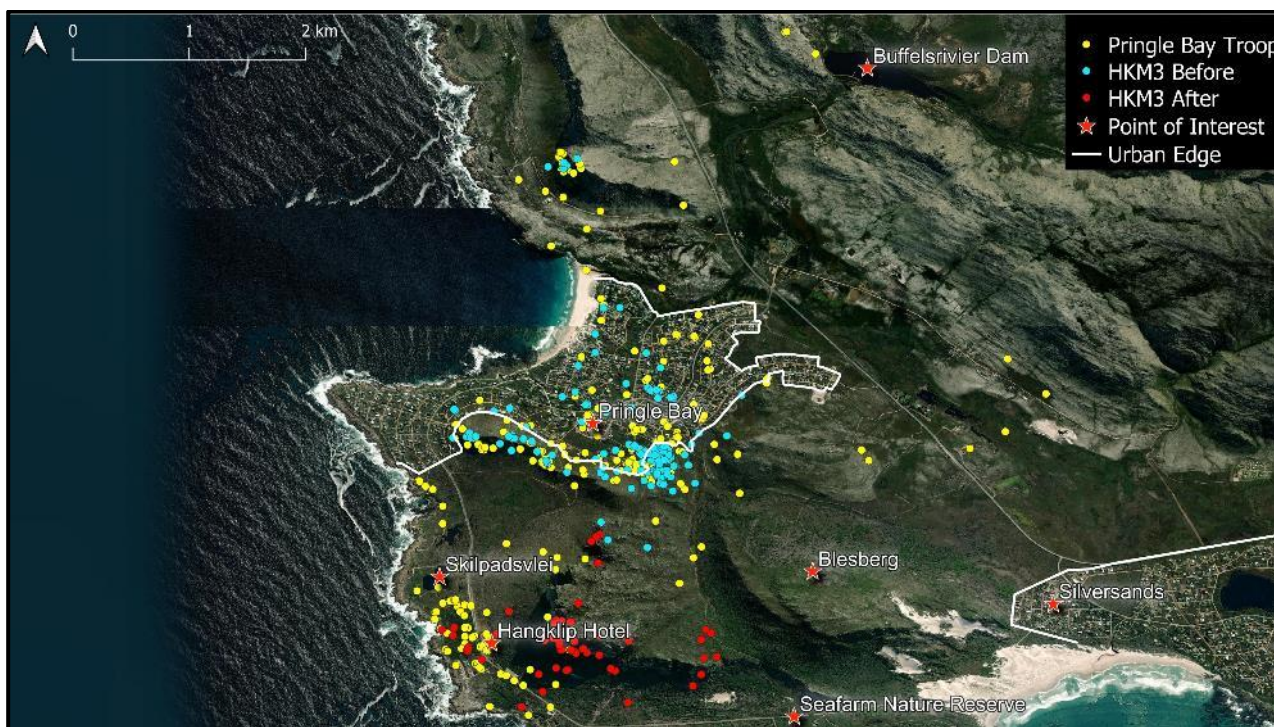


Figure 3.4 Map showing the GPS locations of PBF1 in the Pringle Bay Troop (Yellow); ofHKM3 whilst associating with the Pringle Bay Troop (Cyan); and HKM3 after returning to the Hangklip Troop (Red), as determined by their GPS collars during December 2022.

HANGKLIP TROOP

1.1.7 IN TOWN STATISTICS

- December was the fourteenth consecutive month that no time in town was recorded for the Hangklip Troop.
- Individual time out of town remained at 100% as no individuals from the Hangklip Troop were recorded in the urban area during December. It should be noted that time in town for HKM3 was included in the Pringle Bay Troop total because HKM3 was associating with the Pringle Bay Troop for the majority of December and seemed to have joined that troop.

| | % Out of Town | % Up or Down from Previous Month | Days Entered | Total Time in Town | Avg Time in Town per day | Max Daily Time in Town | Min Daily Time in Town |
|--------------------|---------------|----------------------------------|--------------|--------------------|--------------------------|------------------------|------------------------|
| Troop | 100.0 | 0.0 | 0 | 0:00 | 00:00 | 00:00 | 00:00 |
| Individuals | 100.0 | 0.0 | 0 | 0:00 | 00:00 | 00:00 | 00:00 |

Table 4.1 In Town Statistics for the Hangklip Troop for December 2022. Time is expressed in hours and minutes. Average daylength in December was 14 hours and 24 Minutes..

1.1.8 NOTEWORTHY INCIDENTS

- No incursions were recorded by the Hangklip Troop during December.
- It should be noted that HKM3 was present in the Pringle Bay urban area on ten days during December, however HKM3 was associating with the Pringle Bay Troop at the time.

- HKM3 returned to the Hangklip Troop on 19 December, after having been associated with the Pringle Bay Troop since 21 November.

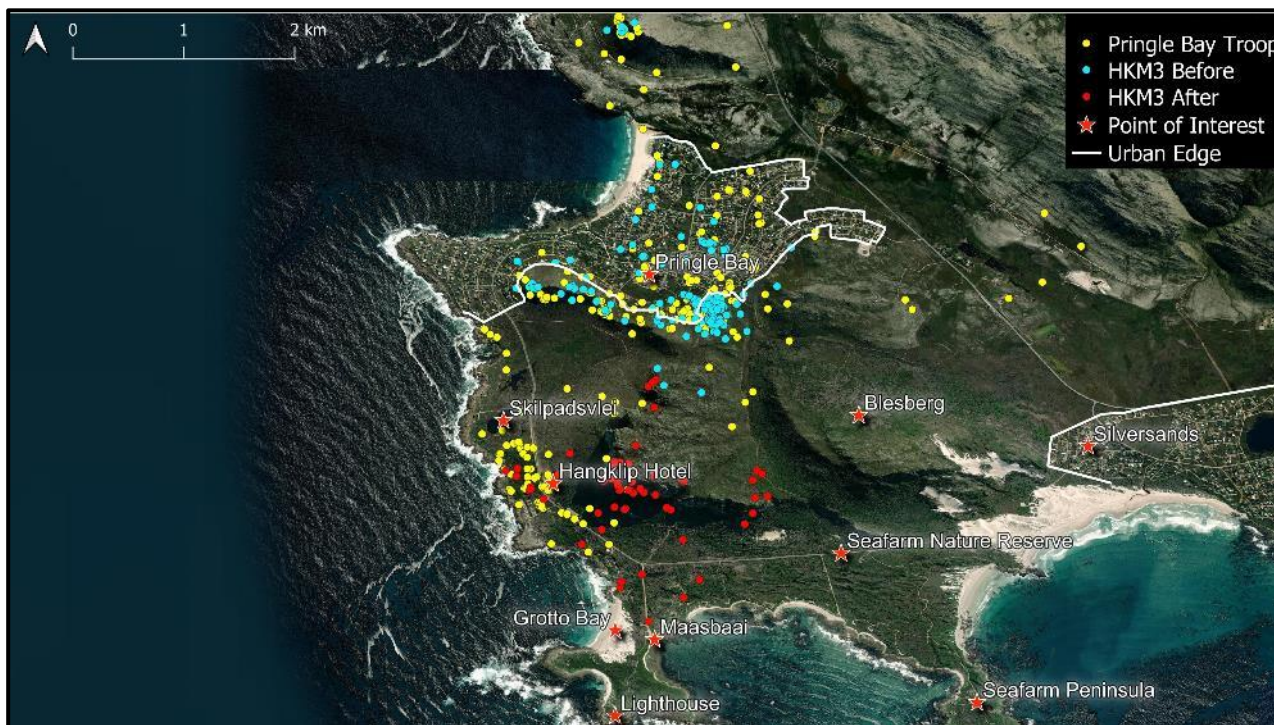


Figure 4.2 GPS locations of HKM3 while associating with the Pringle Bay Troop (Cyan); HKM3 after returning to the Hangklip Troop (Red); and PBF1 in the Pringle Bay Troop (Yellow) as determined by their GPS collars during December 2022.

SILVERSANDS TROOP

1.1.9 IN TOWN STATISTICS

- Troop time out of town decreased from 100% in November to 99.7% during December.
- Time out of town by individuals increased from 96.6% in November to 97.8% in December.

| | % Out of Town | % Up or Down from Previous Month | Days Entered | Total Time in Town | Avg Time in Town per day | Max Daily Time in Town | Min Daily Time in Town |
|--------------------|---------------|----------------------------------|--------------|--------------------|--------------------------|------------------------|------------------------|
| Troop | 99.7 | -0.3 | 2 | 1:20 | 0:40 | 00:40 | 00:40 |
| Individuals | 97.8 | + 1.2 | 14 | 9:57 | 0:42 | 02:00 | 00:23 |

Table 5.1 In Town Statistics for the Silversands Troop for December 2022. Time is expressed in hours and minutes. Average daylength in December was 14 hours and 24 Minutes

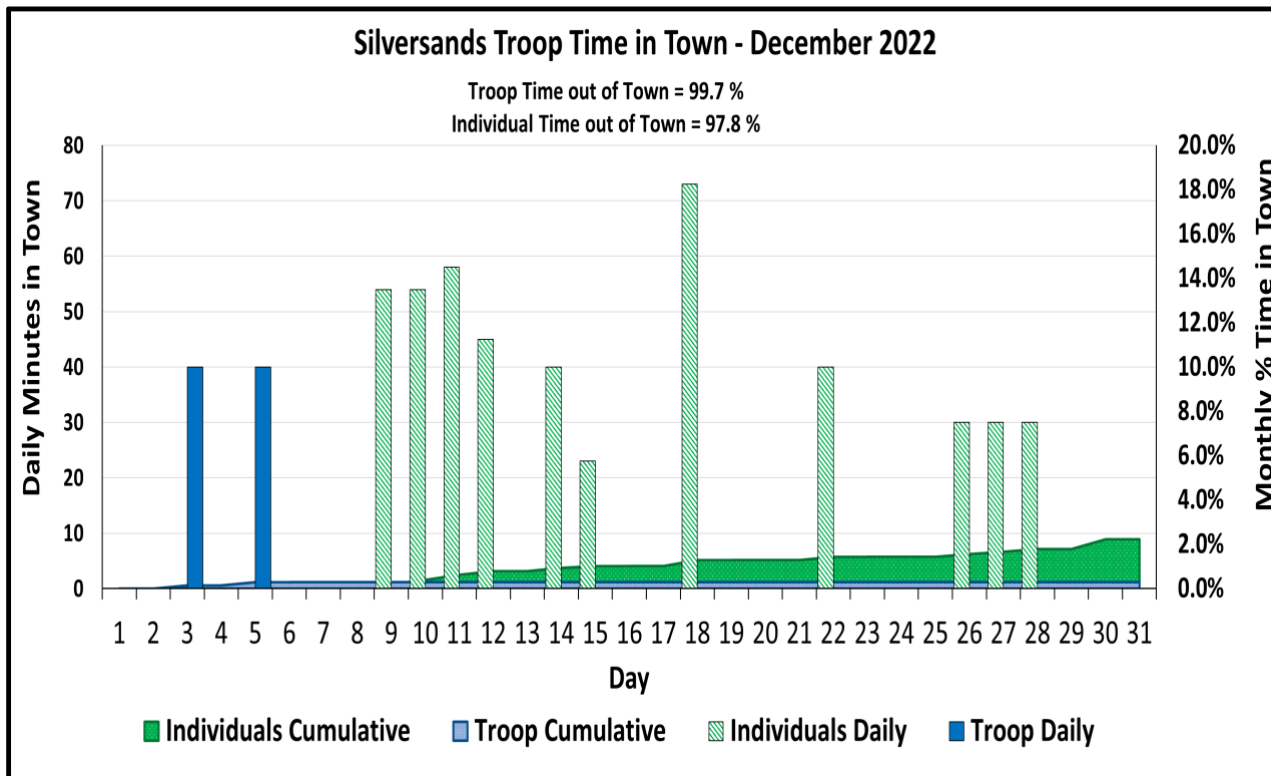


Figure 5.1 Troop and individual daily time (minutes) in town (bars), and monthly (area) percentage Time in Town by the Silversands Troop during December 2022.

1.1.10 NOTEWORTHY INCIDENTS

- Individuals from the Silversands Troop entered the urban area on 14 days during December.
- SSM1 (Short tailed male) entered Silversands on 12 days. On 18 December SSM1 was responsible for two occupied house raids, with additional occupied house raids recorded on 10 and 28 December.

| HWS: TROOP MONTHLY REPORT | | | | | | | | | | | | | | | | | | | | | | | | | | | | | | | | | | | | | |
|---------------------------|--|--|---|---|----|----|----|----|----|----|-----|----|----|----|----|----|----|----|----|-------|----|----|----|----|----|----|-------|-----|----|-------|-----|----|-------|------|---|---|------|
| SECTOR | | CLASSES OF BEHAVIOUR | | | | | | | | | | | | | | | | | | | | | | | | | | | | | | | | | | | |
| OVERSTRAND | | 1 | 2 | 3 | 4 | 5 | 6 | 7 | 8 | 9 | 10 | 11 | 12 | 13 | 14 | 15 | 16 | 17 | 18 | 19 | 20 | 21 | 22 | 23 | 24 | 25 | 26 | 27 | 28 | 29 | 30 | 31 | TOTAL | | | | |
| BABOON TROOP: Silversands | | 4 | 5 | 6 | 7 | 8 | 9 | 10 | 11 | 12 | 13 | 14 | 15 | 16 | 17 | 18 | 19 | 20 | 21 | 22 | 23 | 24 | 25 | 26 | 27 | 28 | 29 | 30 | 31 | TOTAL | | | | | | | |
| MONTH: December | | 1 | 2 | 3 | 4 | 5 | 6 | 7 | 8 | 9 | 10 | 11 | 12 | 13 | 14 | 15 | 16 | 17 | 18 | 19 | 20 | 21 | 22 | 23 | 24 | 25 | 26 | 27 | 28 | 29 | 30 | 31 | TOTAL | | | | |
| YEAR: 2022 | | 1 | 2 | 3 | 4 | 5 | 6 | 7 | 8 | 9 | 10 | 11 | 12 | 13 | 14 | 15 | 16 | 17 | 18 | 19 | 20 | 21 | 22 | 23 | 24 | 25 | 26 | 27 | 28 | 29 | 30 | 31 | TOTAL | | | | |
| BABOON ID | | 1 | 2 | 3 | 4 | 5 | 6 | 7 | 8 | 9 | 10 | 11 | 12 | 13 | 14 | 15 | 16 | 17 | 18 | 19 | 20 | 21 | 22 | 23 | 24 | 25 | 26 | 27 | 28 | 29 | 30 | 31 | TOTAL | | | | |
| Sex | | 1 | 2 | 3 | 4 | 5 | 6 | 7 | 8 | 9 | 10 | 11 | 12 | 13 | 14 | 15 | 16 | 17 | 18 | 19 | 20 | 21 | 22 | 23 | 24 | 25 | 26 | 27 | 28 | 29 | 30 | 31 | TOTAL | | | | |
| Troop | | | | | | | | | | | | | | | | | | | | | | | | | | | | | | | | | | | | | |
| SSM1 (short tail) | | | | 1 | | 1 | | | | 1 | 1,6 | 1 | | | 1 | 1 | | | | 1,6,6 | | | 1 | | | 1 | 1 | 1,6 | | 1 | | | | | | | |
| SSM2 | | | | | | | | | | | | | | | | | | | | 1 | | | | | | | | | | | | | | | | | |
| UnID Males | | | | | | | | | | | | 1 | | | | | | | | | | | | | | | | | | | | | | | | | |
| UnID Male | | | | | | | | | | 1 | | | | | | | | | | 1 | | | | | | | 1 | | | | | | 1 | | | | |
| UnID Sub-Male | | | | | | | | | | | | | | | | | | | | | | | | | | | | | | | | | | | | | |
| UnID Females | | | | | | | | | | | | | | | | | | | | | | | | | | | | | | | | | | | | | |
| UnID Female | | | | | | | | | | | | 1 | | | | | | | | | | | | | | | | | | | | | | | | | |
| UnID Individuals | | | | | | | | | | | | 1 | | | | | | | | | | | | | | | | | | | | | | | | | |
| UnID Juveniles | | | | | | | | | | | | | | | | | | | | | | | | | | | | | | | | | | | | | |
| % | | 0.3 | | | 40 | 40 | | | | | | | | | | | | | | | | | | | | | | | | | | | | | | | |
| Troop | | 0.3 | | | 40 | 40 | | | | | | | | | | | | | | | | | | | | | | | | | | | | | | | 1.33 |
| Individuals | | 2.2 | | | | * | | | | 54 | 54 | 58 | 45 | | 40 | 23 | * | | 73 | | | | 40 | | | | 30 | 30 | 30 | | 120 | | | 9.95 | | | |
| Roost: | | AM | ? | ? | ? | ? | ? | ? | ? | ? | ? | ? | ? | ? | ? | ? | ? | ? | ? | ? | ? | ? | ? | ? | ? | ? | ? | ? | ? | ? | ? | ? | ? | ? | ? | | |
| Roost: | | PM | ? | ? | ? | ? | ? | ? | ? | ? | ? | ? | ? | ? | ? | ? | ? | ? | ? | ? | ? | ? | ? | ? | ? | ? | ? | ? | ? | ? | ? | ? | ? | ? | ? | ? | |
| Roost Sites | | 7 | 8 | 9 | 10 | 11 | 12 | 13 | 14 | 15 | 16 | 17 | 18 | 19 | 20 | 21 | 22 | 23 | 24 | 25 | 26 | 27 | 28 | 29 | 30 | 31 | TOTAL | | | | | | | | | | |
| ID Features of Baboons | | 7 | 8 | 9 | 10 | 11 | 12 | 13 | 14 | 15 | 16 | 17 | 18 | 19 | 20 | 21 | 22 | 23 | 24 | 25 | 26 | 27 | 28 | 29 | 30 | 31 | TOTAL | | | | | | | | | | |
| General remarks | | Please note that numbers in red indicate non-urban raids or incursions. * Indicates individuals were seen in town but were not seen entering and/or leaving. These data were therefore estimated. | | | | | | | | | | | | | | | | | | | | | | | | | | | | | | | | | | | |

Figure 5.2 The Silversands Troop incident sheet for December 2022.

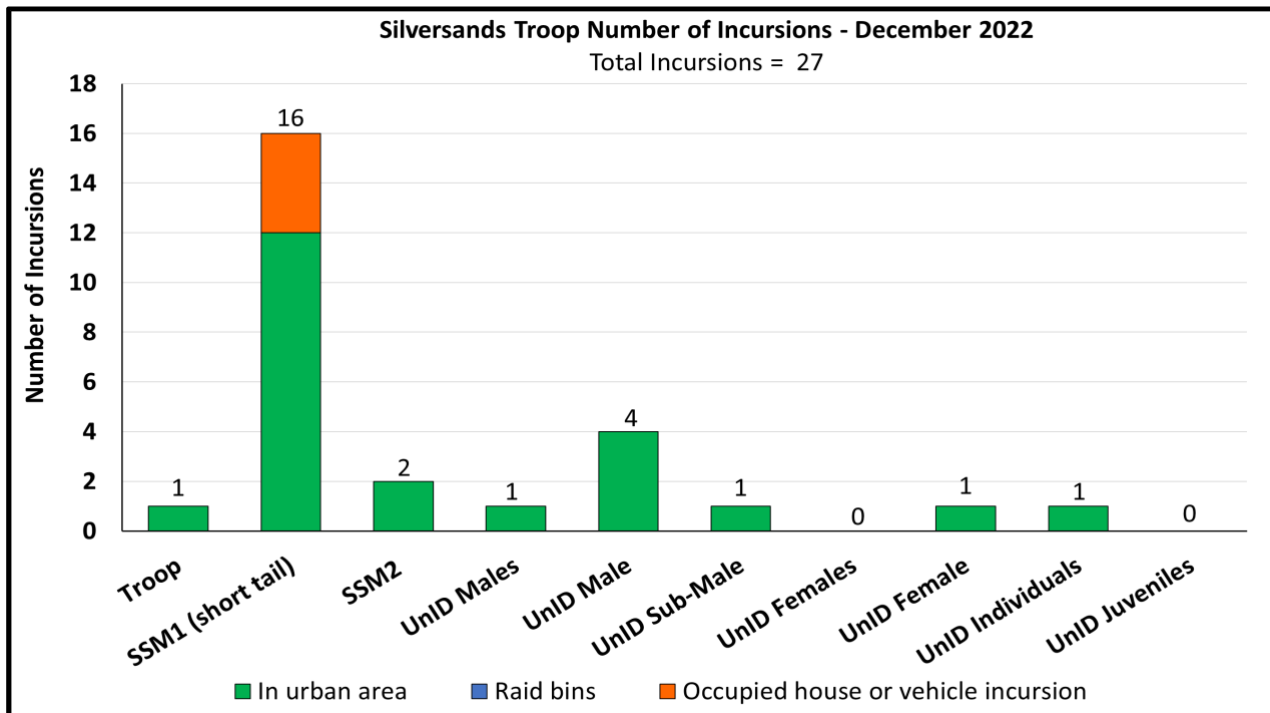


Figure 5.3 Number of incursions by the Silversands Troop and individuals during December 2022. **Note:** Observed incursions are not hotline related, but are incursions observed, or verified with evidence, by HWS Field Staff.

BETTY'S BAY TROOP

1.1.11 IN TOWN STATISTICS

- Troop time out of town increased from 90.3% to 94.3% during December.
- Individual baboons time out of town increased significantly during December, from 77.7% in November to 86.8 % during December.

| | % Out of Town | % Up or Down from Previous Month | Days Entered | Total Time in Town | Avg Time in Town per day | Max Daily Time in Town | Min Daily Time in Town |
|--------------------|---------------|----------------------------------|--------------|--------------------|--------------------------|------------------------|------------------------|
| Troop | 94.3 | + 4.0 | 13 | 25:17 | 1:56 | 4:19 | 0:21 |
| Individuals | 86.8 | + 9.1 | 29 | 58:54 | 2:01 | 4:48 | 0:13 |

Table 6.1: In Town Statistics for the Betty's Bay Troop for December 2022. Time is expressed in hours and minutes. Average daylength in December was 14 hours and 24 minutes.

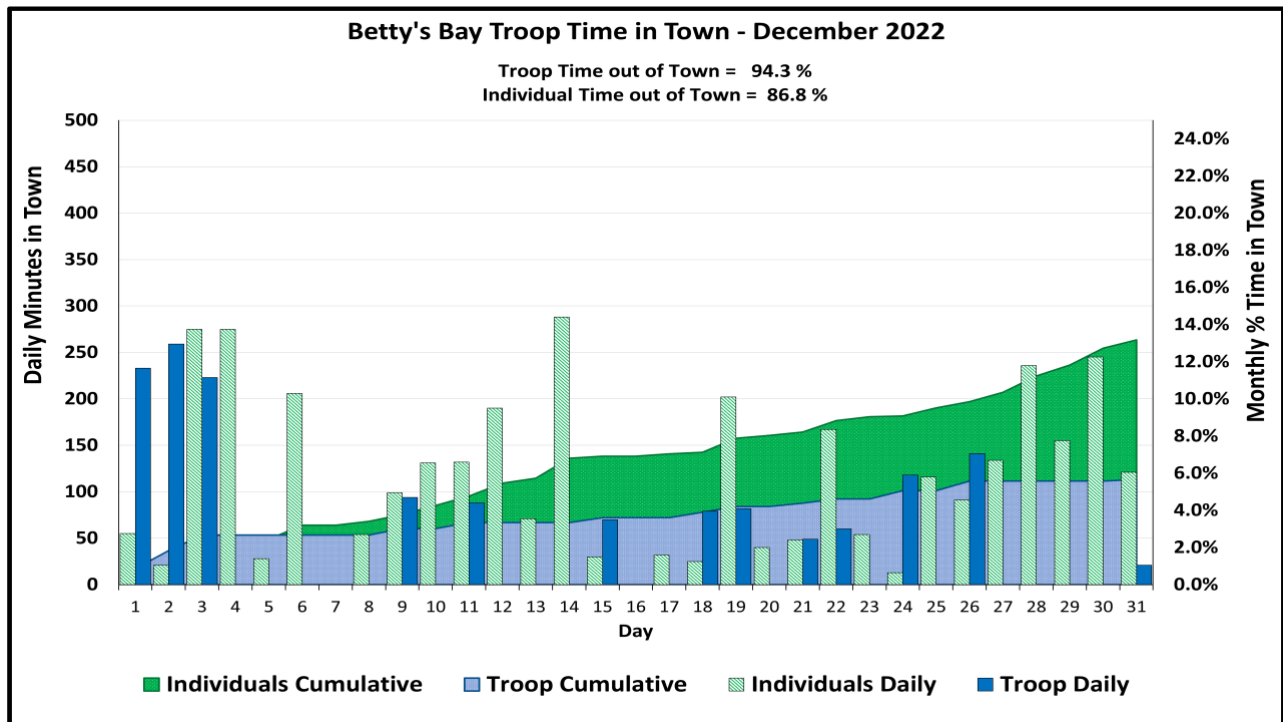


Figure 6.1 Troop and individual daily time (minutes) in town (bars), and monthly (area) percentage Time in Town by the Betty's Bay Troop during December 2022.

1.1.12 NOTEWORTHY INCIDENTS

- A new-born infant was observed with the troop on 14 December.
- On 14 December BBM4 attacked a juvenile baboon. The juvenile baboon had previously been injured by a car during October, and had been captured and treated for a fractured forelimb caused by BBM4 on 24 November. On 14 December BBM4 inflicted abdominal trauma and lacerations to the right forelimb of the juvenile. Due to the history of injuries sustained by this particular individual it was decided that the juvenile would be captured however the troop moved over the mountains before a capture attempt could be initiated. On the following day, 15 December, the troop remained absent all day further precluding any capture attempts. During the evening of 15 December, a hotline call was received at 19h29 informing HWS that the injured juvenile was observed near Sunny Seas. The juvenile was subsequently captured and transported to a veterinary clinic. Initial examination revealed the intestines protruding from the abdominal cavity. As a result, the veterinarian recommended that the juvenile be humanely euthanised.
- On 21 December BBM4 was observed limping. On the same day a resident was observed brandishing what looked like an airgun in the presence of some baboons. It is unclear if the injury to BBM4 was related to the incident.

| HWS: TROOP MONTHLY REPORT | | | | | | | | | | | | | | | | | | | | | | | | | | | | | | | | | | | |
|---------------------------|-----|---|-----|-----------------|-----|-------------------------|-----|---|----|---------------------|-----|---|-----|---|-----|------------------------|-----|---------------------------------------|----|-----------------------|-------|-----|-----|----|-----|-------|-----------|-----|-------|-----|-----|-------|-------|-----|-------|
| SECTOR | | CLASSES OF BEHAVIOUR | | | | | | | | | | | | | | | | | | | | | | | | | | | | | | | | | |
| OVERSTRAND | | 1 | 2 | 3 | 4 | 5 | 6 | 7 | 8 | 9 | 10 | 11 | 12 | 13 | 14 | 15 | 16 | 17 | 18 | 19 | 20 | 21 | 22 | 23 | 24 | 25 | 26 | 27 | 28 | 29 | 30 | 31 | TOTAL | | |
| BABOON TROOP: | | BETTY'S BAY | | 1 In urban area | | 4 Altercation with pets | | 7 Threatening behaviour/ attacking/ stealing food | | 2 Raid bins | | 5 Unoccupied house or vehicle incursion | | 8 Breaking & Entering/Damaging property | | 3 Non malicious damage | | 6 Occupied house or vehicle incursion | | 9 Nocturnal incursion | | | | | | | | | | | | | | | |
| MONTH: December | | YEAR: 2022 | | | | | | | | | | | | | | | | | | | | | | | | | | | | | | | | | |
| BABOON ID | Sex | 1 | 2 | 3 | 4 | 5 | 6 | 7 | 8 | 9 | 10 | 11 | 12 | 13 | 14 | 15 | 16 | 17 | 18 | 19 | 20 | 21 | 22 | 23 | 24 | 25 | 26 | 27 | 28 | 29 | 30 | 31 | TOTAL | | |
| Troop | | 1 | 1 | 1 | | | | | | 1 | 1 | 1 | 1 | | | | | | | 1 | 1 | 1 | 1 | | | | | | | | | | 1 | 15 | |
| BBM2 | M | | | | 1 | | | | | | 1,1 | 1,1 | 1 | 1,2 | 1,6 | 1 | | | | 1 | 1 | | | 1 | 1 | | 1 | 1 | 6 | 1,6 | | | 20 | | |
| BBM4 | M | | | | 1,1 | | 1,6 | | | | 1 | 1,1 | 1,6 | 1 | | | | 1 | 1 | 1 | 1,6,6 | | 1,6 | 1 | 1 | 1,1 | 1,6 | | 1,1,6 | | 1 | 1 | 32 | | |
| BBF1 | F | | | | | | | | | | | | | | | | | | | | | | | 1 | | | | | | 1,6 | | 1,6 | 5 | | |
| BBF2 | F | | | | | | | | | | | | | | | | | | | | | | | | | | | | | | | | | | |
| Unid Male | M | | | | | | | | | | | | | | | | | | | | | | | | | | | | | | | | | | |
| Unid Females | F | | | | | | | | | | 1 | | | | | | | | | | | | | | | | | | | 1 | | | 3 | | |
| Unid Female | F | 1 | | 1,1 | 1 | 1 | | | | | 1 | 1 | | | | | | 1 | 1 | 1 | | | | | 1 | 1,1,6 | 1 | 1,6 | | 1,6 | | | 19 | | |
| Unid Individuals | | 1 | 1 | 1 | 1 | 1 | 1 | 1 | 1 | 1 | 1,6 | 1 | 1 | | | | | 1 | 1 | 1 | 1 | 1 | 1 | 1 | 1 | 1,1,6 | 1,6,6,6,6 | 1 | 1 | | | 21 | | | |
| Unid Juveniles | | 1 | 1 | 1 | 1 | 1 | 1 | 1 | 1 | 1 | 1 | 1 | | | 1 | 1,6 | | 1 | 1 | 1 | 1 | 1,6 | | | 1 | 1 | 1 | 1 | | | | 19 | | | |
| | | TIME SPENT IN TOWN (Minutes) | | | | | | | | | | | | | | | | | | | | | | | | | | | | | HRS | | | | |
| Troop | % | 5.7 | 233 | 259 | 223 | | | | | | 94 | 88 | | | | | | 79 | 82 | | 49 | 60 | | | 118 | | 141 | | | | | 25.28 | | | |
| Individuals | | 13.2 | 55 | 21 | 275 | 275 | 28 | 206 | | | 54 | 99 | 131 | 132 | 190 | 71 | 288 | 30 | | 32 | 25 | 202 | 40 | 48 | 167 | 54 | 13 | 116 | 91 | 134 | 236 | 155 | 245 | 121 | 58.90 |
| Roost: | AM | 1 | 17 | 1 | 1 | 2 | 3 | 3 | 3 | 3 | 1 | 2 | 13 | 2 | 7 | ? | 5 | 5 | ? | 2 | 5 | 5 | 5 | 5 | 12 | 17 | 1 | 1 | 12 | 12 | 2 | 12 | 1 | | |
| Roost: | PM | 17 | 2 | 1 | 2 | 3 | 3 | 3 | 1 | 2 | 13 | 2 | 7 | ? | 5 | 5 | ? | 2 | 5 | 5 | 5 | 5 | 12 | 17 | 1 | 1 | 12 | 12 | 2 | 12 | 1 | | | | |
| Roost Sites | 1 | Disa Kloof | | | 2 | Leopard Kloof | | | 3 | Leopard Kloof Lower | | | 4 | Leopard Kloof Upper | | | 5 | Sunny Seas | | | | | | | | | | | | | | | | | |
| | 6 | Sunny Seas West | | | 7 | Sunny Seas East | | | 8 | Bass Lake | | | 9 | Bass Lake West | | | 10 | Bass Lake East | | | | | | | | | | | | | | | | | |
| | 11 | Jacks Bay | | | 12 | Zigzag | | | 13 | Church | | | 14 | Kleinmond Lookout | | | 15 | Kopje | | | | | | | | | | | | | | | | | |
| | 16 | Caltex | | | 17 | Waterfall | | | 18 | Unknown | | | 19 | Harold Porter Gardens | | | 20 | Palmeit | | | | | | | | | | | | | | | | | |
| | 21 | Kasteel Kop | | | 22 | Pimples | | | 23 | Isaacs River Kloof | | | 24 | Jean's Hill | | | 25 | Heuningklip | | | | | | | | | | | | | | | | | |
| | 26 | Sandown Peak | | | 27 | Three Sisters | | | 28 | | | | | | | | | | | | | | | | | | | | | | | | | | |
| | | | | | | | | | | | | | | | | | | | | | | | | | | | | | | | | | | | |
| ID Features of Baboons | | | | | | | | | | | | | | | | | | | | | | | | | | | | | | | | | | | |
| General remarks | | Please note that numbers in red indicate non-urban raids or incursions. | | | | | | | | | | | | | | | | | | | | | | | | | | | | | | | | | |

Figure 6.2 The Betty's Bay Troop incident sheet for December 2022.

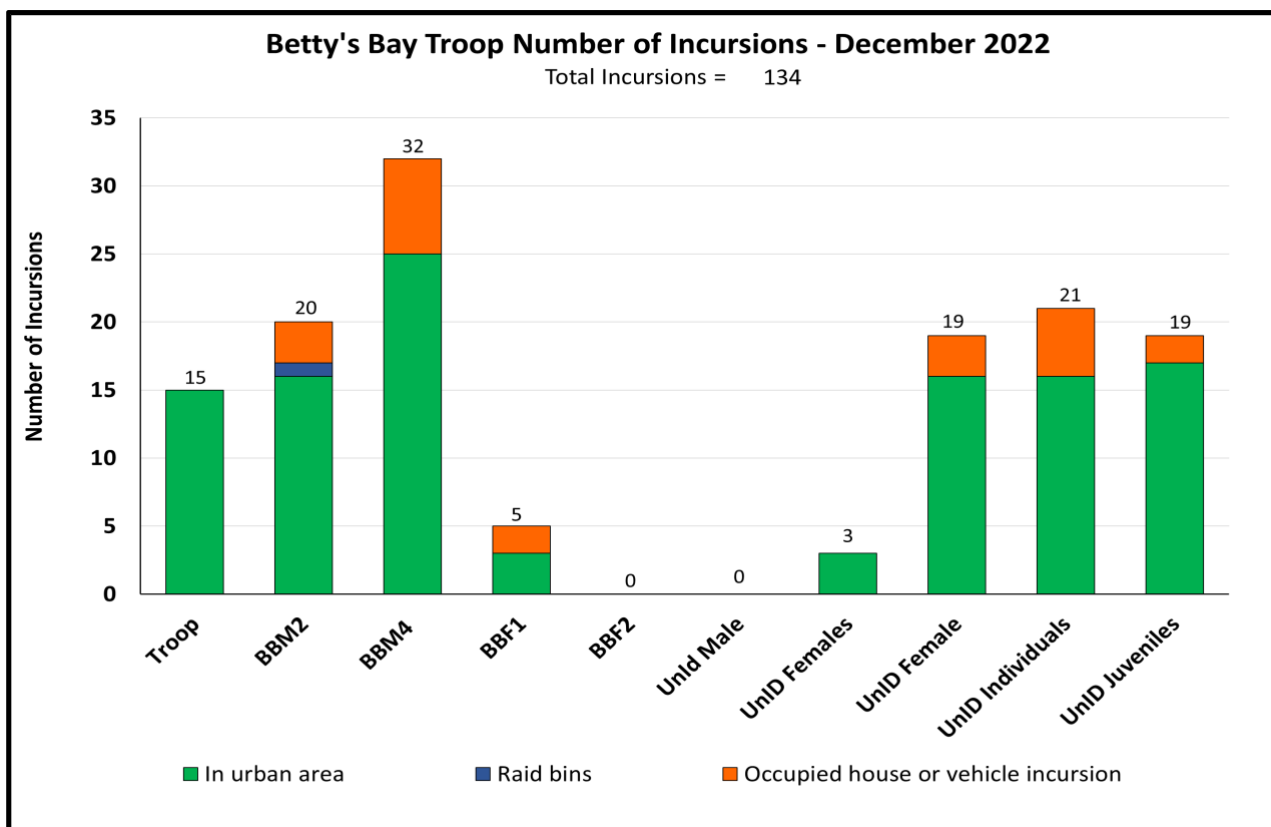


Figure 6.3 Number of incursions by the Betty's Bay Troop and individuals during December 2022. **Note:** Observed incursions are not hotline related, but are incursions observed, or verified with evidence, by HWS Field Staff.

BIRTHS, DEATHS & MIGRATIONS

- One birth was recorded in Betty's Bay in the western Overstrand during December.
- One death was recorded in Betty's Bay during December. A juvenile baboon was humanely euthanised.
- One migration was recorded, with HKM3 returning to the Hangklip Troop from the Pringle Bay Troop.

GENERAL COMMENTS – ALL TROOPS

POPULATION CHARACTERISTICS

During December there was a total of one death and one birth (**Table 7.1**). Both the death and birth were observed in the Betty's Bay Troop. A new-born infant was recorded on 14 December, whilst an injured juvenile baboon was humanely euthanised on 16 December due to injuries sustained in an attack by another baboon (**Table 7.2**). One migration was observed in December; HKM3 returned to the Hangklip Troop on 19 December after having associated with the Pringle Bay Troop since 21 November.

| Troop | October | June | June | June | December 2022 | | | Total observed Births (1 July 2022 to 30 December 2022) | Total observed Deaths (1 July 2022 to 30 December 2022) | Total observed Migrations (1 July 2022 to 30 December 2022) |
|-----------------|-----------|-----------|------------|------------|---------------|----------|--------------------------|--|--|--|
| | 2019 | 2020 | 2021 | 2022 | Births | Deaths | Emigration / Immigration | | | |
| Voëlklip | 29 | 29 | 27 | 37 | 0 | 0 | 0 | 0 | 1 | 0 |
| Vogelgat | N/A | 22* | 29 | 27 | 0 | 0 | 0 | 0 | 1 | -1 |
| Onrus | N/A | N/A | 25* | 24* | 0 | 0 | 0 | 0 | 0 | 0 |
| Hamilton Russel | N/A | N/A | 21* | 25 | 0 | 0 | 1 | 0 | 0 | +1 |
| Pringle Bay | 16 | 16 | 17 | 14 | 0 | 0 | -1 | 2 | 1 | +3 |
| Betty's Bay | N/A | 19 | 20 | 23 | 1 | 1 | 0 | 5 | 5 | 0 |
| Hangklip | N/A | N/A | 30 | 38 | 0 | 0 | 1 | 0 | 1 | -1 |
| Silversands | N/A | N/A | 43 | 41* | 0 | 0 | 0 | 0 | 1 | 0 |
| Total | 45 | 64 | 166 | 228 | 1 | 1 | 1 | 7 | 10 | +2 |

Table 7.1: Population data for the managed troops in the Overstrand in December 2022. Emigration /Immigration figures show animal movements between troops. * Troop sizes were estimated, because they were not seen enough to get accurate counts. Note: Troop numbers are counted once a year in June. Troop numbers are not updated during the year by just counting births and deaths, because these may occur without being observed by field rangers.

| Deaths | 2019/20 (October - June) | 2020/21 (July - June) | 2021/22 (July 2021 - June 2022) | 2022/23 (July 2022 - December 2022) | December 2022 | TOTAL (since October 2019) |
|---------------------|-----------------------------|--------------------------|------------------------------------|--|---------------|-------------------------------|
| Management | 3 | 0 | 1 | 0 | 0 | 4 |
| Human Induced (HID) | 1 | 2 | 9 | 6 | 0 | 18 |
| Direct * | 1 | 2 | 8 | 5 | 0 | 16 |
| Indirect ** | 0 | 0 | 1 | 1 | 0 | 2 |
| Natural | 2 | 7 | 7 | 2 | 1 | 18 |
| Unknown | 0 | 0 | 2 | 2 | 0 | 4 |
| TOTAL DEATHS | 6 | 9 | 19 | 10 | 1 | 44 |

Table 7.2: Causes of baboon deaths since October 2019; *Deaths caused directly by humans, such as motor vehicle accidents, shooting, poisoning and dogs. **Deaths caused indirectly by humans such as electrocutions and fire.

HOTLINE DATA

Incursion related hotline calls in managed areas increased significantly from 65 during November to 168 in December. The majority of calls came from Voëlklip (n = 68), reflecting the increased presence of the troop in the urban area during December (**Figure 8.1**). The majority (85%) of hotline calls were made to alert HWS to the presence of baboons in the urban area (**Figure 8.2**). One incidence of threatening/stealing behaviour was reported in Pringle Bay.

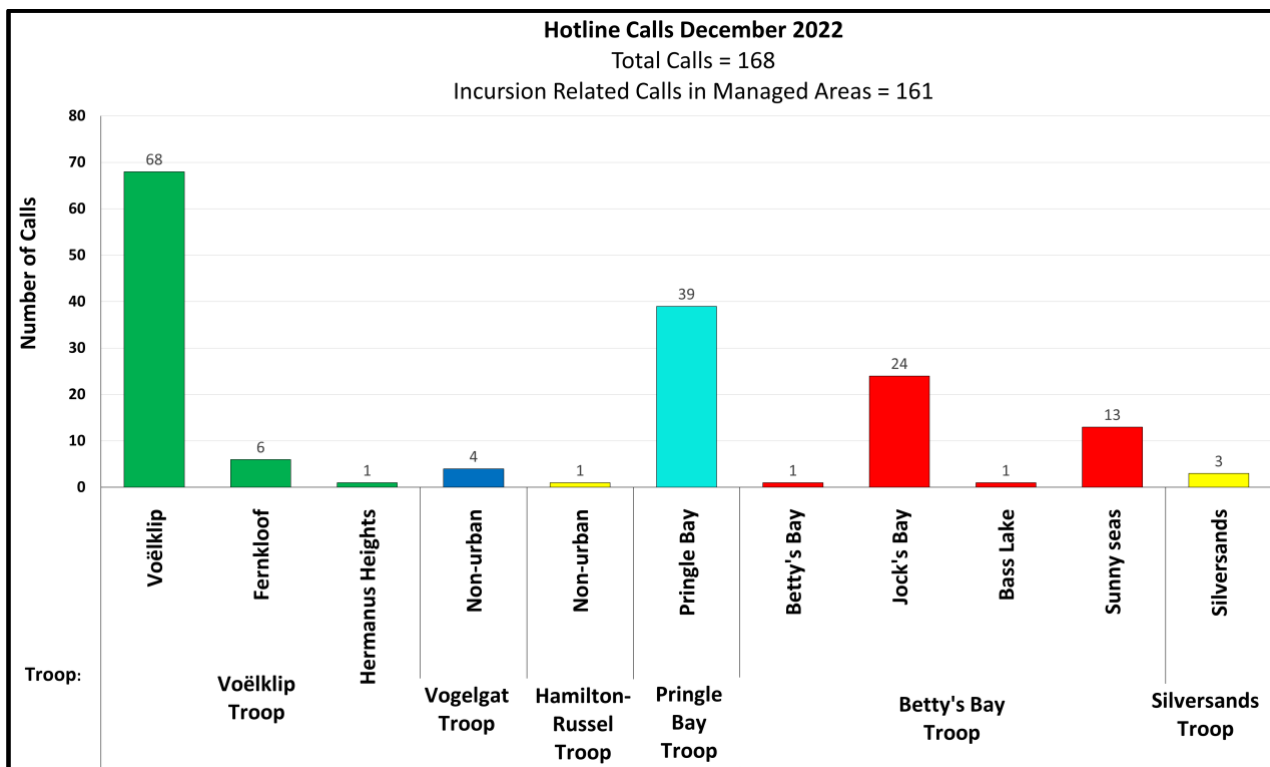


Figure 8.1: Hotline calls in baboon affected areas for December 2022. Incursion related hotline calls are calls reporting managed baboons in urban areas. Managed areas are those areas in which baboon troops are known to occur and are actively managed.

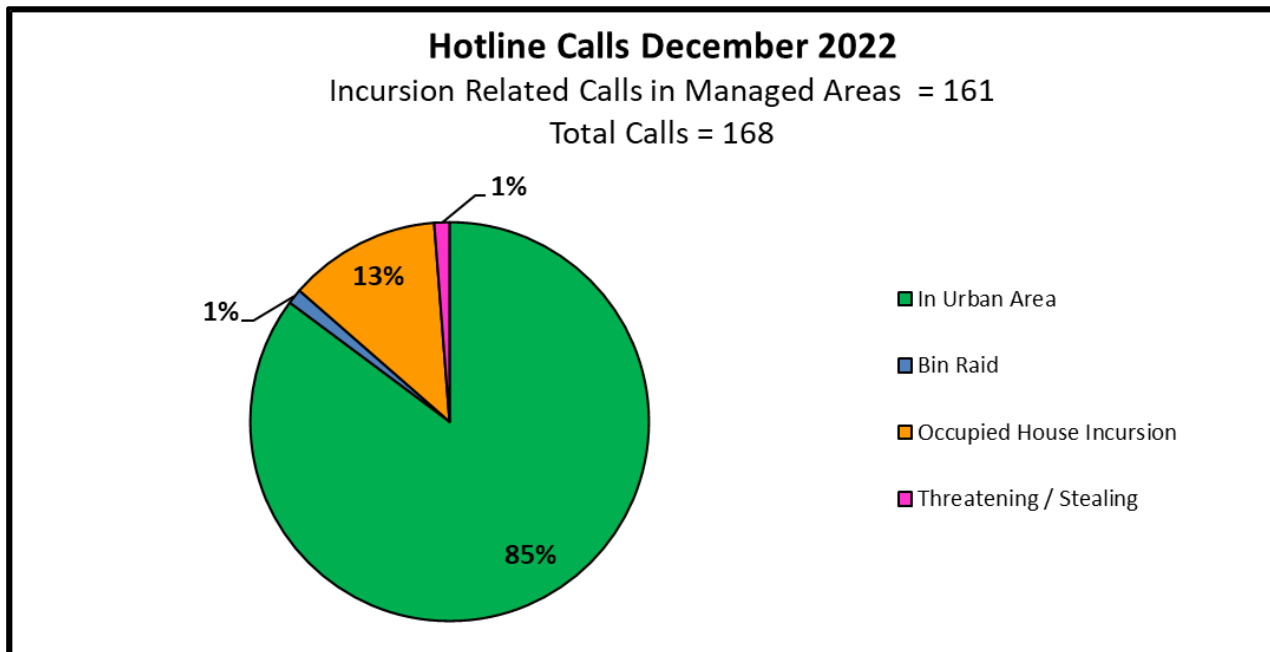


Figure 8.2: Composition of incursion-related hotline calls during December 2022. **Note:** This chart represents the composition of hotline calls, not the composition of known incursions by baboons.

RECORDED INCURSIONS

The total number of incursions recorded during the month increased significantly from 343 in November to 415 during December (**Figure 9.1**) with the Pringle Bay and Betty’s Bay Troop responsible for 80% of all incursions, and significantly these two troops recorded 93.6% of all assertive incursions. In the Western Overstrand the number of occupied house incursions increased substantially from 45 in November to 70 in December, with 44 recorded in Pringle Bay alone. Notably, four occupied house incursions were recorded in Silversands, all performed by SSM1. The number of threatening or stealing instances decreased by half, with six incidents recorded during December. In the Eastern Overstrand, there was a significant increase in the number of incursions, with the Voëlklip Troop responsible for 58 incursions during December. On a positive note, however, despite a strong presence in the urban area during December, only one occupied house raid was recorded by the Voëlklip Troop.

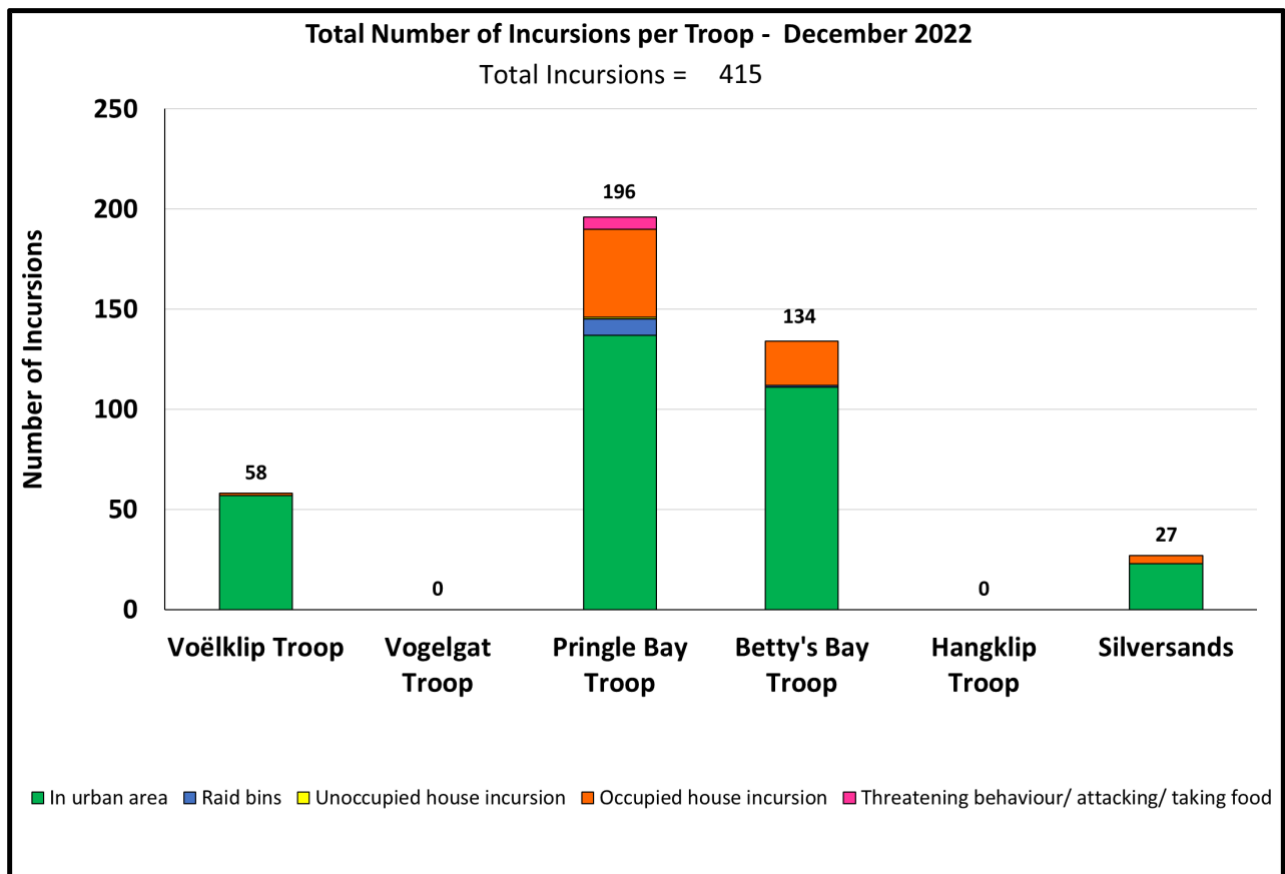


Figure 9.1 Total observed incursions per troop during December 2022. **Note:** Observed incursions are not hotline related, but are incursions observed, or verified with evidence, by HWS Field Staff.

PERCENTAGE TIME OUT OF TOWN

During December the average time out of town by troops increased slightly from 95.7% to 96.2% (**Figure 9.2**) whilst individual time out of town decreased from 95.3% in November to 93.4% in December. The decrease in average time out of town for individuals is likely due to individuals from the Voëlklip and Pringle Bay Troops spending a greater proportion of their time inside urban areas during December in response to the increased presence of tourists.

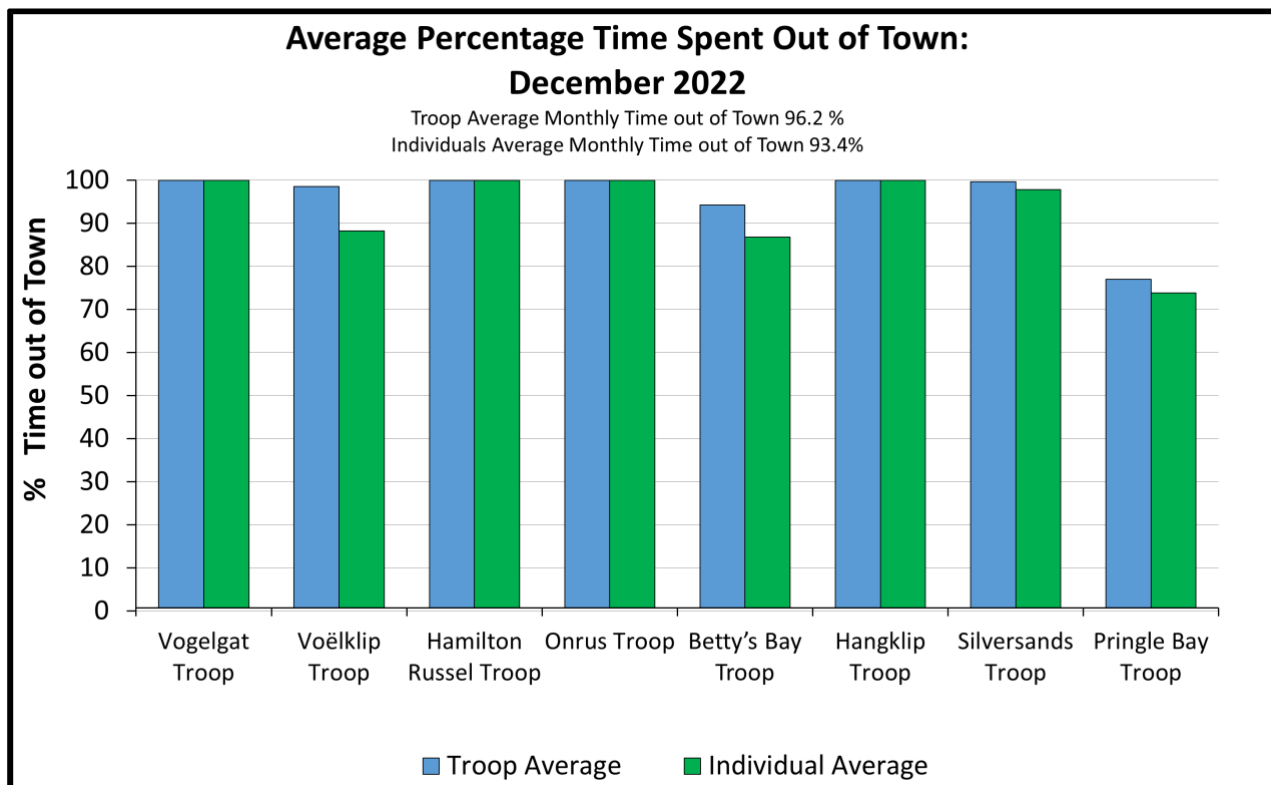


Figure 9.2 Percentage time the managed baboon troops and individuals spent out of town during December 2022.

RECOMMENDATIONS

- Ripening **fruit on fruit trees** in baboon-affected areas should be harvested to remove the attractant for baboons. **This is particularly important now during spring and summer.**
- **Waste and recycling collection should be prioritised** to take place in the early mornings.
- Residents should not put out their waste **the night before** collection day.
- All bins used in baboon effected areas should be **baboon-proof and locked.**
- Additional **baboon awareness** campaigns focused on tourists during holiday seasons would be beneficial.
- Baboon-proof bins are required throughout the western region of the Overstrand. Betty's Bay should be regarded as a high priority area because there are very few baboons proof bins in place. It is stipulated in the Overstrand Waste Management Bylaw that residents must use baboon proof bins in baboon effected areas.
- **Refuse bags** should not be left lying open on the sidewalk and easily available to baboons.
- **Open vegetable gardens** should be baboon proofed.
- Bird feeders also feed baboons and are therefore strongly discouraged.
- Residents are encouraged to record and report the feeding of wildlife to the municipality, CapeNature, or to the baboon hotline (072 028 0008).

CONCLUSION

December was a challenging month in the Eastern Overstrand. Whilst members from the Vogelgat Troop were totally absent from the urban area for the third consecutive month, the Voëklip Troop spent an increased amount of time in town during December. Several adult females in the group, most notably VKF7, showed high levels of persistence in their attempts to access the urban area. Fortunately, despite the increased amount of time spent in the urban area by members of the Voëklip Troop, only one occupied house incursion was recorded.

Whilst the Vogelgat Troop did not enter town on any days during the month, there have been continued reports of incursion behaviour by members of this troop into properties along the R43. Associated with this behaviour, there has been a marked increase in the number of baboons killed along this stretch of the R43 since the completion of the upgrade of this road. It is recommended that this issue be addressed because the easy access of the baboons to the road, and the neighbouring properties alongside it, poses a significant risk to both motorists and baboons.

In Pringle Bay the number of assertive incursions remained unacceptably high, with 51 being recorded during December. This number of assertive incursions is more than double the number recorded for the second most assertive troop, namely the Betty's Bay Troop, with 22 assertive incursions recorded during December. In Pringle Bay, REM1 was responsible for 13 assertive incursions, with BTM1 and PBM2 responsible for five and six respectively. Other males recorded another seven assertive incursions. What is most disturbing about these statistics, is that apart from the 31 assertive incursions by the adult males in the troop, another 20 were recorded by the other sex and age classes. In fact, six were recorded by juveniles alone. These juveniles have been allowed to be taught by their adults that is acceptable to raid houses occupied by humans.

As mentioned in previous reports, this type of behaviour cannot be allowed to continue because it threatens the viability of the troop by exposing baboons to potential retaliation by members of the community who feel threatened or endangered by this behaviour. In this regard, it is worth noting that during the 2022 calendar year, there were five deaths in the Pringle Bay Troop. Three were directly human induced (one shooting, one poisoning, and one vehicle collision). There were also two "natural" deaths, which were cases of infanticide, and almost certainly caused by the unnaturally high density of males associating with this troop and town.

In Silversands, SSM1 continued to access the urban area and was responsible for four occupied house incursions during December. It is recommended that SSM1 be radio collared because it is very difficult to anticipate his movements into town, or locate him once he has entered the urban area. It is vitally important that SSM1 be prevented from teaching other baboons how to raid, such as is currently happening in the Pringle Bay Troop.

Finally, it is pleasing to note that across the baboon managed areas in the Overstrand there were only nine recorded bin raids despite the influx of baboon naïve tourists during the festive season.